



**RAJESH INDIA**  
MANUFACTURING PVT. LTD.

# RAJESH INDIA

## MANUFACTURING PVT. LTD.

Rajesh India is right choice with excellent work

**Gold & Silver Refinery Machine Manufacturer**



Rajesh Enterprises



**MADE WITH PRIDE IN INDIA**

Leading Manufacturer of Precious Metal Refinery Machines

## ABOUT THE DIRECTOR

Mr. Rajesh Phule hails from Maharashtra. He Moved to Mumbai and established Rajesh India Manufacturing Pvt. Ltd. / Rajesh Enterprises in 2007 with the objective of becoming world's leading manufacturer in precious metal refinery. His continuous efforts in development of technology and innovation has brought immense value to its stakeholders.



**RAJESH INDIA**  
MANUFACTURING PVT. LTD.



## WHY RAJESH ENTERPRISES

Rajesh India Manufacturing Pvt. Ltd. / Rajesh Enterprises is a well-known brand in precious metal refining not only in India but overseas as well. We have a strong market presence with more than 1000 satisfied customers.

Rajesh India Manufacturing Pvt. Ltd. / Rajesh Enterprises was established in 2007 by Mr. Rajesh Phule with the aim of providing superior product value, innovation and commitment to excellent customer service. We offer over 15 products and have a strength of 150 employees including skilled engineers, efficient technicians, dedicated backend team, innovative in-house designing team and hardworking laborers to provide best in-class value to customer.

We specialize in offering customized solutions with the help of in-house designing and production setup. We have 7 service centers across India to provide prompt 24x7 pre and after sales service.

Our team is dedicated to maintain the quality standard, certified procedures and reducing the cost without compromising in quality. We believe in innovation, adapting new technology and keep up with the trend in the VUCA world.

## ABOUT US .....

Rajesh India Manufacturing Pvt. Ltd. / Rajesh Enterprises is a globally renowned company, accredited with BIS and ISO 9001:2015. Since the inception we have installed more than 1000 machines across India and overseas. Our objective is to become a trendsetter in the precious metal refining industry, optimize growth of our organization as well as our stakeholders.

## OUR MISSION .....

Profitable growth through superior customer service, innovation, quality and commitment. We prioritize providing value added solutions and responsive service to our customers.

## OUR VISION .....

Our vision is to build a machine that enables us to become world leader in precious metal refining industry with a strong emphasis on productivity, customer satisfaction, safety, health and environment in refining industry across the globe.



**RAJESH INDIA**  
MANUFACTURING PVT. LTD.



# GOLD REFINERY SPECIFICATION AND HIGHLIGHTS

This machine efficiently refines old gold in any form such as old ornaments, doré bar, polishing dust, buffing dust, filing dust, or any other form, results of refining will achieve 999.9 purity as per testing report and segregate all other impurities mixed in gold such as silver, iridium, ruthenium, osmium, zinc, etc. This machine is made with the objective of human safety hence the fumes generated from machine pass through condenser penetrate in scrubber and get out from the outlet in the form of non-polluted odorless transparent air. This machine can be managed by a single person post training. Our engineer will come to your location to provide training. The whole process of refining takes 4 hours & the refining cost comes to Rs.550 per Kg. including all raw material chemicals & power consumption. High-quality motor, pumps and fitting gives this machine very low maintenance. This machine is beneficial to the manufacturer, jewelry shop, and gold exchanger.

- Available capacity 1 to 1000kg
- No foul smell, 100 % pollution free
- Minimum area required for installation
- Titanium dissolution tank for longer durability
- No loss of metal during process
- Single person operating system
- No bare hand touching or sniffing chemical
- Safe & secure
- With auto heating / cooling attachment
- All motors & pumps are of imported quality
- Scrubber unit PH7 approved
- No vibration, no sound
- Triple cycling condenser
- Best use for bullion market exchange
- Refining cost approx. Rs.550 per kg
- Non-corrosive material
- High durability & lifespan
- Automatic with control panel
- 999.9 purity - result as per testing report
- Chemical flooring

# GOLD REFINERY MACHINE TUMBLER MODELS



**RAJESH INDIA**  
MANUFACTURING PVT. LTD.



# GOLD REFINERY MACHINE TUMBLER MODELS

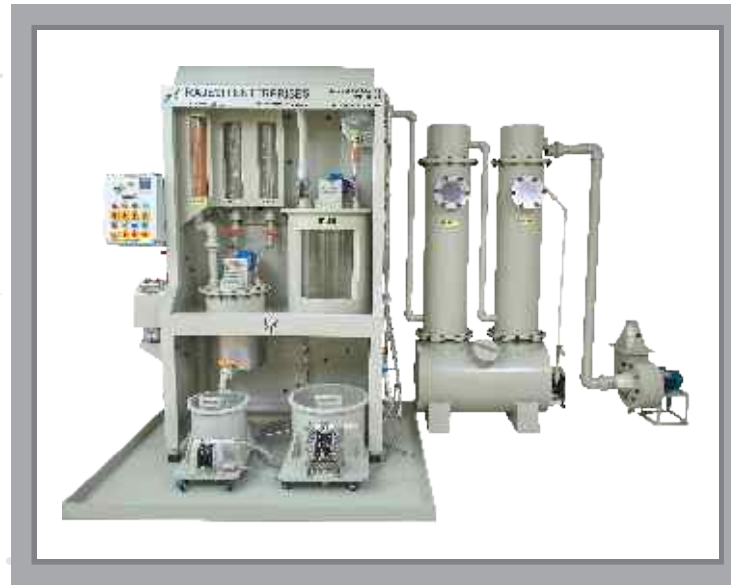


**RAJESH INDIA**  
MANUFACTURING PVT. LTD.





## GOLD REFINERY MACHINE MODEL TITAN



## GOLD REFINERY MACHINE MODEL PRIME



**RAJESH INDIA**  
MANUFACTURING PVT. LTD.

# GOLD REFINERY MACHINE MODEL TITAN



**RAJESH INDIA**  
MANUFACTURING PVT. LTD.



# GOLD REFINERY MACHINE MODEL PLATINUM



**RAJESH INDIA**  
MANUFACTURING PVT. LTD.

# SILVER REFINERY SPECIFICATION AND HIGHLIGHTS

This machine efficiently refines old silver in any form such as old ornaments, Dorebar, polishing dust, buffing dust, filing dust or any other form, results of refining will achieve 99.99 purity as per touch report and segregate all other impurity mix in Silver, such as Gold, Copper, brass etc. this machine is made considering human safety, hence fumes generated from machine pass through condenser penetrate in scrubber & get out from the outlet in the form of non-polluted odorless transparent air. And this machine can be managed by single person without any prior knowledge. Our engineer will visit your place & will give you full training & support. refining cost comes to Rs.180 Per Kg. including all raw material chemicals & power consumption. High quality motor & pumps & fitting give this machine very low maintenance.

This Machine is beneficial to the manufacturers, Jewellery shop owners, Silver exchangers.

- Available capacity 10 to 1000kg
- No foul smell, 100 % pollution free
- Minimum area required for installation
- Stainless steel chemical grade dissolution tank for longer durability
- No loss of metal during process
- Single person operating system
- No bare hand touching or sniffing chemical
- Safe & secure
- With auto heating / cooling attachment
- All motors & pumps are imported quality
- Scrubber unit PH7 approved
- No vibration, no sound
- Triple cycling condenser
- Best use for bullion market exchange
- Refining cost approx. Rs.240 per kg.
- Non-corrosive material
- High durability & lifespan
- Automatic with control panel
- 999.9 purity - result as per testing report
- Chemical flooring

The most common form of silver is sterling silver. This is actually only 92.5% pure silver, with the other 7.5% made up of other precious metals including copper.



**RAJESH INDIA**  
MANUFACTURING PVT. LTD.

# SILVER REFINERY MACHINES





**RAJESH INDIA**  
MANUFACTURING PVT. LTD.

# SILVER REFINERY MACHINES







**RAJESH INDIA**  
MANUFACTURING PVT. LTD.

# HYDRAULIC PRESS MACHINE



SILVER CAPSULE







**RAJESH INDIA**  
MANUFACTURING PVT. LTD.

## LAB FOR NABL/BIS HALLMARKING & ASSAYING TESTING SETUP

As per the guidelines provided by Government of India, the Hallmarking of Jewelry is mandatory. This will also help the existing hallmarking center along with the new upcoming centers to improve their business while helping the retailers in easing their hallmarking process.

We offer below equipment to setup BIS/NABL accredited assaying and hallmarking setup:

- Testing Laboratory Setup
- Scale (three different types)
- XRF Machine
- Laser Machine
- Laboratory accessories





SCALE



XRF MACHINE



SCALE



LASER MACHINE



SCALE



XRF MACHINE



**RAJESH INDIA**  
MANUFACTURING PVT. LTD.



**RAJESH INDIA**  
MANUFACTURING PVT. LTD.

# GOLD COIN SETUP

## 1. Gold Sheet Rolling Machine

- Sturdy construction
- Abrasion resistance

- Desired dimensions are reached with total precision

## 2. Hydraulic Coin Cutting Machine

- Ideal for gold and silver blanks cutting
- Hassle free operating and dual mode operating with foot and switch

- Cut the blanks in clear edges for better results
- Die fitting adjustment system with easy deposit drawer

## 3. Hydraulic Minting Press Machine

- Auto embossing & ejecting System
- Electric operating PLC based control panel
- High-test possible embossing forces

- High stroke rate & faster production
- Multiple stroke with variable force and die lifting
- High/Low-pressure system having indicator



1



2



3

MINTING COIN SETUP



**RAJESH INDIA**  
MANUFACTURING PVT. LTD.

# 99.99 PURITY GOLD KILOBARS

Gold bars are normally produced directly from gold that has been melted. Molten gold is poured into a bar-shaped mold and left to solidify.



IMPORTED KILOBAR SETUP





# TITANIUM /SS REACTOR/VESSEL/FILTER USED FOR GOLD /SILVER DISSOLUTION/NITRIC EQUATION PROCESS

Titanium/SS Reactor is used for chemical dissolution process of gold and silver using aqua regia and nitric respectively. It comes with auto heating/cooling system for ease of use.



→ TITANIUM NITRIC  
PROCESS COOKER TYPE VESSEL



→ TITANIUM OPEN TYPE VESSEL



→ TITANIUM NITRIC  
PROCESS COOKER TYPE VESSEL



→ GRANULE MAKING



→ TITANIUM REACTORS



→ TITANIUM  
OPEN TYPE VESSEL





**RAJESH INDIA**  
MANUFACTURING PVT. LTD.

## TITANIUM /SS REACTOR/VESSEL/FILTER USED FOR GOLD /SILVER DISSOLUTION/NITRIC EQUATION PROCESS



TITANIUM REACTOR



TITANIUM REACTOR



TITANIUM NITRIC  
PROCESS COOKER TYPE VESSEL

## TITANIUM /SS REACTOR/VESSEL/FILTER USED FOR GOLD /SILVER DISSOLUTION/NITRIC EQUATION PROCESS



→ TITANIUM REACTOR



→ TITANIUM REACTOR



→ TITANIUM NITRIC PROCESS  
COOKER TYPE VESSEL



→ TITANIUM VERTICAL VESSELS



→ TITANIUM REACTORS



**RAJESH INDIA**  
MANUFACTURING PVT. LTD.

**PP/PVC/PPH/FRP SCRUBBER /  
CHEMICAL STORAGE TANKS/  
FILTER / BLOWER / PIPELINE /  
SULPHURIC CHATKA UNIT**





**RAJESH INDIA**  
MANUFACTURING PVT. LTD.



CHEMICAL STORAGE TANK



TRIPLE TOWER SCRUBBER



SIX TOWER SCRUBBER



FOUR TOWER SCRUBBER



**RAJESH INDIA**  
MANUFACTURING PVT. LTD.



FILTER UNIT



FILTER UNIT



TRIPLE TOWER NITRIC SCRUBBER



THREE TOWER SCRUBBER





**RAJESH INDIA**  
MANUFACTURING PVT. LTD.



FOUR TOWER SCRUBBER



SIX TOWER SCRUBBER



AIR BLOWER



BLOWER



**RAJESH INDIA**  
MANUFACTURING PVT. LTD.



CLOSED TYPES SCRUBBER



TRIPLE TOWER SCRUBBER



FOUR TOWER SCRUBBER



FUME HOOD



**RAJESH INDIA**  
MANUFACTURING PVT. LTD.



VERTICAL HEAVY DUTY SCRUBBER



CHEMICAL STORAGE TANK



FRP HEAVY DUTY BLOWER

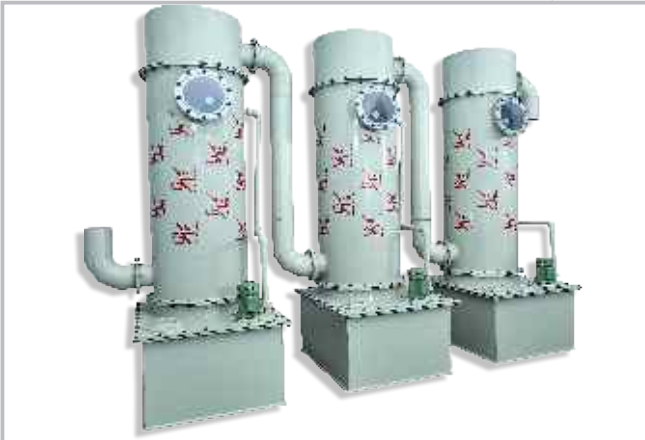


VERTICAL HEAVY DUTY SCRUBBER

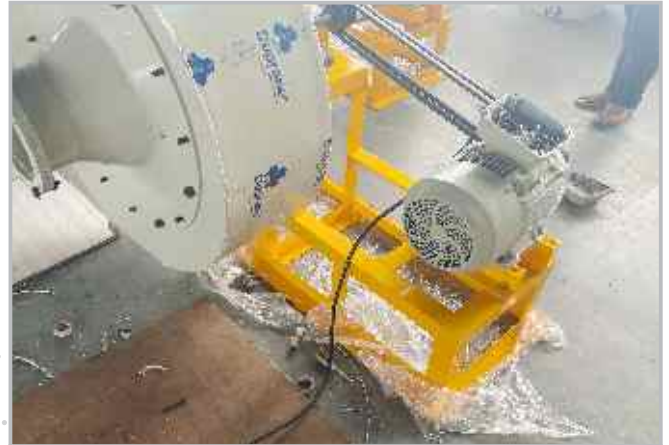




**RAJESH INDIA**  
MANUFACTURING PVT. LTD.



VERTICAL HEAVY DUTY SCRUBBER



HEAVY DUTY BLOWER



VERTICAL HEAVY DUTY SCRUBBER



TRIPLE TOWER SCRUBBER





FILTER



DOUBLE TOWER SCRUBBER



**RAJESH INDIA**  
MANUFACTURING PVT. LTD.



HEAVY DUTY BLOWER



CHEMICAL STORAGE TANK



**RAJESH INDIA**  
MANUFACTURING PVT. LTD.



PP PRESS MACHINE



FRP CHEMICAL STORAGE TANK

**GOLD / SILVER / DUST / DRYER & FURNACE  
MELTING MACHINES**

## DUST BURNOUT FURNACE

- Electric dust burnout furnace is an automatic machine used for manufacturing jewelry, polishing, filing and buffing dust. It is used to burn and dry powder form metal like gold, silver, platinum and palladium. Available in two power source i.e. electric and gas. It reaches maximum temperature of 500 to 1000 °C, requires voltage of 220-240 V and 3 phase power to work.



→ ELECTRICAL DUST  
BURNOUT FURNACE



→ GAS DUST  
BURNOUT FURNACE



→ DUST BURNING  
UNIT FOR JEWELLERY



**RAJESH INDIA**  
MANUFACTURING PVT. LTD.



# MELTING MACHINE

- Melting furnace is an automatic machine used for raw gold, jewelry, mining dorebar, silver ingot, silver jewelry, copper and jewelry alloy. Melting furnaces are used to overheat solid materials until they become liquefied. This machine is beneficial for jewellers and manufacturers. It reaches maximum temperature of 1200 °C, requires voltage of 220-240 V and frequency requirement is 50-60HZ to work.
- In order to meet the different requirements of the clients, our expertise is offering various types of melting machines such as Induction, electric, gas , these machines come in a different capacity and can melt from 1 gram to as per customers requirement.



GOLD ELECTRICAL MELTING MACHINE



GOLD ELECTRICAL MELTING MACHINE



GOLD DRYER





GOLD ELECTRICAL  
MELTING MACHINE



GOLD ELECTRICAL  
MELTING MACHINE



GOLD INDUCTION  
MELTING MACHINE



**RAJESH INDIA**  
MANUFACTURING PVT. LTD.



**RAJESH INDIA**  
MANUFACTURING PVT. LTD.

## EFFLUENT TREATMENT PLANT (WASTE CHEMICAL WATER TREATMENT PLANT)

- Effluent Treatment Plant or ETP is particularly designed to purify industrial waste water for its reuse and release safe water to environment from the harmful effect caused by the effluent.
- The principle of operation of ETP is Physico-Chemical treatment followed by Polishing Treatments like -Sand Filtration, Activated Charcoal treatment (Absorption), Ozonisation (Chemical Oxidation), Ultra Filtration (UF), Reverse Osmosis (RO) and evaporation (If required).
- We provide ETP starting from 200 litres upto 10,000 litres basis requirement. The plant design is compact and easy handling sludge system.



ETP PLANT



**RAJESH INDIA**  
MANUFACTURING PVT. LTD.



SHOT MAKING



EVAPORATION PLANT



# OUR PRESENCE IN THE GLOBE

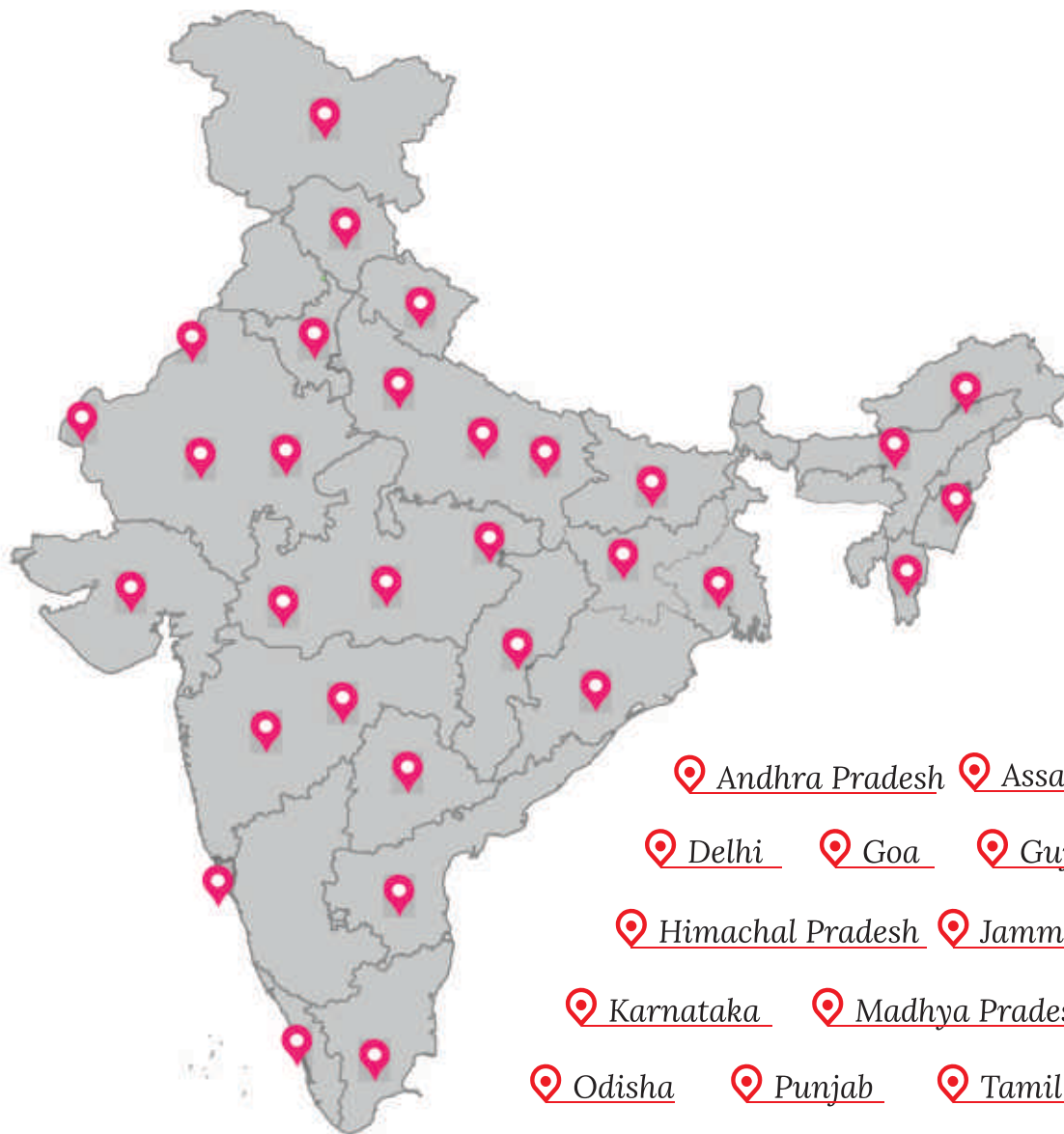


-  Bangladesh       Bahrain       Canada       Indonesia       Iran
-  Malaysia       Mauritius       Mexico       Nepal       Nigeria
-  Papua New Guinea       Qatar       South Africa       Tanzania       Thailand
-  Turkey       United Kingdom       United Arab Emirates       United States
-  Uganda       Shri Lanka



**RAJESH INDIA**  
MANUFACTURING PVT. LTD.

# OUR PRESENCE IN INDIA



Andhra Pradesh Assam Bihar Chhattisgarh

Delhi Goa Gujarat Haryana

Himachal Pradesh Jammu & Kashmir Jharkhand

Karnataka Madhya Pradesh Maharashtra

Odisha Punjab Tamil Nadu Telangana

Uttar Pradesh Uttarakhand West Bengal

Kerala Rajasthan Bihar

# SATISFIED CUSTOMER LIST / PRIME CUSTOMER LIST

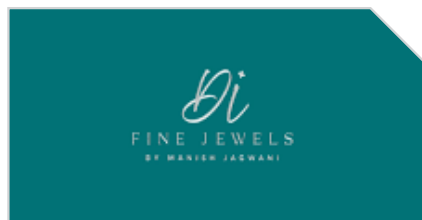


# SATISFIED CUSTOMER LIST / PRIME CUSTOMER LIST





# SATISFIED CUSTOMER LIST / PRIME CUSTOMER LIST



# EXHIBITION PARTICIPATION



"Teamwork is the ability to work together toward a common vision. The ability to direct individual accomplishment toward organizational objectives. It is the fuel that allows common people to attain uncommon results."





**RAJESH INDIA**  
MANUFACTURING PVT. LTD.

## OUR STRENGTH





**RAJESH INDIA**  
MANUFACTURING PVT. LTD.

## OUR PRODUCTION





# FACTORY





## SERVICE & SUPPORT

Rajesh India Manufacturing Pvt. Ltd. / Rajesh Enterprises is known for quality and customer oriented service. We are ISO certified & BIS accredited company. Our customers are based not only in India, but in other countries too. We are in the industry from last 1.5 decade. Our service begins with the moment you start talking to us continuing for initial enquiry to fulfillment of your order, we customize product as per customers need, provide installation & training and serve throughout the life of your product.

### SERVICE BRANCHES

Mumbai (H.O.) | Ahmedabad | Delhi | Hyderabad  
Chennai | Bengaluru | Lucknow | Kolkata

### GET IN TOUCH WITH US

Managing Director	 9699550124 / 9168626224
Sales	 9168626222 / 9665769998 / 9372179891 / 7276737049
E-Mail	rajeshenterprises1412@gmail.com / rajeshindia0124@gmail.com rajeshindiasales@gmail.com
Customer Care	 7028887124  9607182333 / 9970555697
E-Mail	feedback.rajeshenterprises@gmail.com
Websites	www.goldrefineryunits.com / rajeshenterprises.net

Address :

Plot No.: 4, Poman Village Road, Near Universal College  
of Engineering, Kaman Bhiwandi Main Road, Off HP Petrol Pump,  
Behind Vasai Frozen Foods, Vasai East - 401208, Mumbai, Maharsahtra

